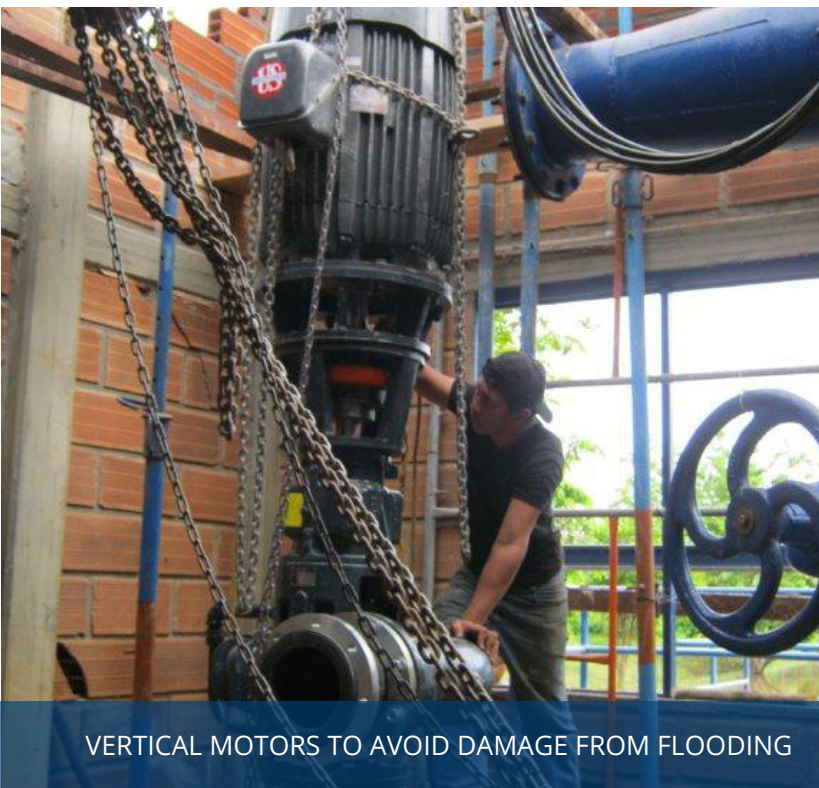




CORNELL PUMP COMPANY

# APPLICATIONS

## MUNICIPAL



VERTICAL MOTORS TO AVOID DAMAGE FROM FLOODING



BANANA BOATS WERE USED TO TRANSPORT THE PUMPS ACROSS THE RIVER



## CORNELL 8H-VC18 PUMPS FORM A 'GREEN DRAGON'

### ***Muscle, Ingenuity, and Determination need to move Cornell Pumps 250 Miles into the Jungle to Supply Fresh Drinking Water***

Two vertical mounts, 8H-VC18 units, were installed in the Colombian jungle on the river Caucasia, about 400 kilometers (248 miles) South of the coast. Because of some exciting features, the installation earned the nickname the Green Dragon.

The pumps were designed vertically to elevate the motors to avoid damage from flooding – a regular occurrence during the rainy season. The pumps replaced a locally manufactured brand, IHM. The pumps were put in series to overcome a relatively high-pressure requirement due to a 1.5 kilometer (~1 mile) piping distance to a local village. The pumped river water is used to supply the village with freshly treated water for personal consumption. Due to the Rain-a-flo blue paint color (which looks green) and the exotic discharge and suction piping design, the locals named the pump installation the Green Dragon.

The logistics required to get the equipment to the job site were fascinating. The crew employed traditional banana boats to transport the pumps and motors across the river to the pump house. Once the equipment arrived, wooden rails and rollers were used to move the pumps and motors along the ground and, in some cases, sloped gradients. Ropes, block, and tackle apparatus were used to do much of the heavy lifting.

Pump house modification was also required, as the crew removed a large portion of the roof to accommodate the vertical installation and the discharge piping—the snout of the Green Dragon. It was an incredible feat of local ingenuity to make this a successful building, relying solely on manual labor, determination, and brute strength.

The pumps have operated successfully since 2010, supplying clean drinking water to the village.