

CORNELL PUMP COMPANY

# CO-PILOT™

INDUSTRIAL INTERNET OF THINGS PUMP MONITOR



CORNELL  
**Co-Pilot™**

# CO-PILOT™ SPECIFICATIONS



Connect via Cell Network



5 Sensor Inputs



Remote Control



## CORNELL Co·Pilot™

### THE POWER OF IOT

Cornell Co-Pilot™ is a monitoring system that connects to your pump to track temperature, vibration, and location. Co-Pilot can also be powered with a wired connection for continuous monitoring and control system integration. Our Internet of Things (IoT) platform reflects our dedication to cutting-edge design and meeting customer needs.

### USE THE CO-PILOT TO:

- Plan maintenance
- Check operation
- Reduce manual inspections
- Track pump location
- Demonstrate run conditions to customers on warranty claims
- Improve run time through the maintenance program

### MONITORING AT YOUR FINGER TIPS

Easily monitor your pump's performance with desktop and mobile apps available for iOS and Android. Receive alerts for out-of-condition operations and view the last GPS location of the pump, all in one convenient platform.

### CORNELL CO-PILOT ALLOWS YOU TO:

- Monitor pumps using the cloud and IOT
- Monitor temperature, vibration, and GPS location
- Additionally monitor pressure, flow, start/stop operations, and more\*
- Track data over time via web-based and mobile apps
- Receive real-time pump data for performance and health monitoring
- Receive alerts for preset running conditions

\*Requires external sensors; contact Cornell for details.

# CO-PILOT™ SPECIFICATIONS

## TECHNICAL SPECIFICATIONS

### COMMUNICATION

- 4G LTE cellular cloud connectivity
- Monitor all connected pumps from a single app
- GPS Location Information

### ON -BOARD MONITORING

- 3-axis vibration monitoring [Inch/Sec]
- Temperature  $\pm 5^{\circ}\text{F}$  /  $\pm 2.7^{\circ}\text{C}$
- Modbus (R5-485)
- Up to 5 additional inputs to connect external sensors

### NOTIFICATIONS

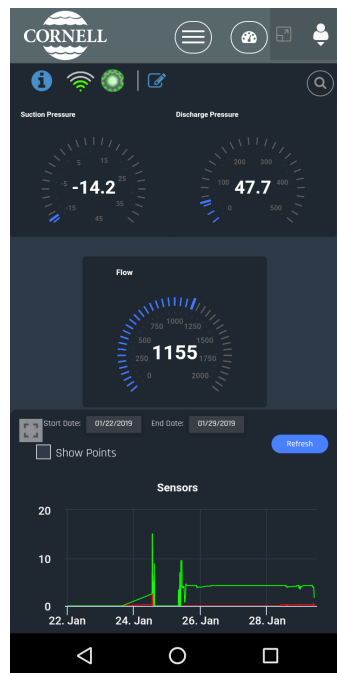
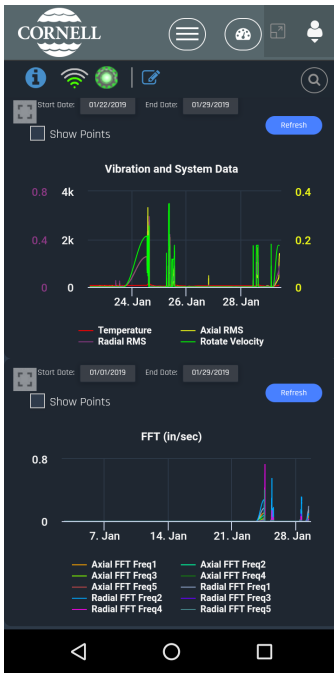
- Vibration threshold cross
- Temperature threshold cross
- Service Hours reached
- Pump Start/ stop
- High pressure
- And more

### DIMENSIONS/ OPERATIONS/STANDARDS

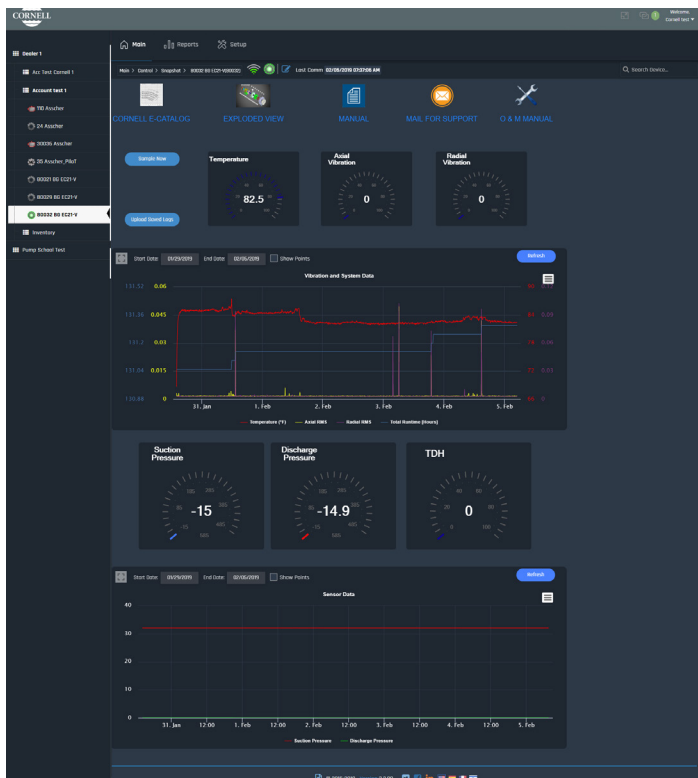
- 3.4" x 3.4" x 1.9" (86mm x 86mm X 48mm)
- Robust insulated enclosure
- IP65 compliant (dust tight and protected against water from a nozzle)
- FCC Part 15 and RoHS compliant
- Temperatures from  $-22^{\circ}\text{F}$ /  $-30^{\circ}\text{C}$  to  $158^{\circ}\text{F}$ / $70^{\circ}\text{C}$

### POWER

- External DC power: 12-24 VDC
- 500mA MAX
- Avg. 70mA @VDC



Screenshots from the mobile Co-Pilot app.



Co-Pilot desktop version screenshot.

Get started at  
[CO-PILOT.CORNELLPUMP.COM](http://CO-PILOT.CORNELLPUMP.COM)

PART OF RPM<sup>2</sup> ASSET  
MANAGEMENT SYSTEM



# CORNELL PUMP COMPANY MARKET & PRODUCT LINE



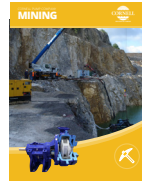
AGRICULTURE



FOOD PROCESS



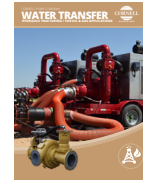
INDUSTRIAL



MINING



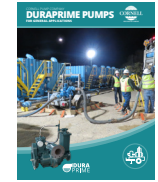
MUNICIPAL



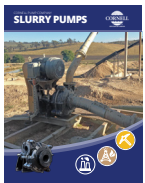
WATER  
TRANSFER



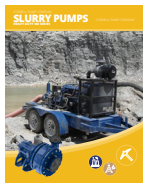
REFRIGERATION



CONSTRUCTION



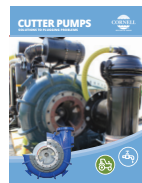
SLURRY



SLURRY SM



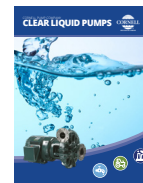
MANURE



CUTTERS



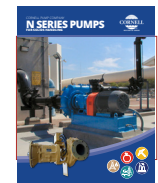
SELF PRIMING



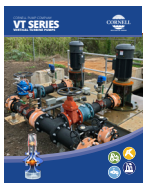
CLEAR LIQUIDS



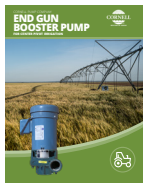
MX SERIES



N SERIES



CYCLONE™



EDGE™



HYDRAULIC  
SUBS



IMMERSIBLE



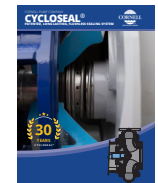
CD4MCU



RUN-DRY™



PRIMING  
SYSTEMS



CYCLOSEAL®

Cycloseal® and Redi-Prime® are Registered Trademarks of Cornell Pump Company.

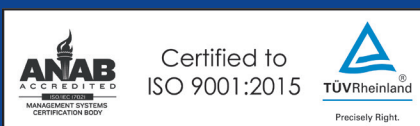
Cornell pumps and products are the subject of one or more of the following U.S. and foreign patents:

6,074,554; 6,036,434; 6,079,958; 6,309,169; 6,104,949.

24 - IO - BR - 001

**CORNELLPUMP.COM**  
©2024 CORNELL PUMP COMPANY

AUTHORIZED CORNELL PUMP DISTRIBUTOR



Cornell Pump Company  
Clackamas, Oregon, USA  
P: +1 (503) 653-0330  
F: +1 (503) 653-0338