

CORNELL PUMP COMPANY

# CO-PILOT™

REMOTE VALVE CONTROLLER



CORNELL   
**Co-Pilot™**  
REMOTE VALVE CONTROLLER

# CO-PILOT™ REMOTE VALVE CONTROLLER



Connect via Cell  
or Ethernet



4 Digital Inputs  
4 Analog Inputs



4 Controllable Valves



## CORNELL Co·Pilot™

### CO-PILOT REMOTE VALVE CONTROLLER COMPATIBLE VALVES

The Co-Pilot Remote Valve Controller enhances pumping operations by seamlessly integrating valve control, providing advanced precision and flexibility. It can manage up to four 4-20 mA valves simultaneously and offers precise positioning ranging from 0% to 100% using analog out signals.

This controller enables remote monitoring and control of valves, allowing users to leverage additional analog or digital inputs. In the event of a power loss, the system ensures safety by offering the option to back up valves in either open or closed positions, safeguarding personnel and equipment.

#### USE THE INTEGRATED SCADA UNIT FOR:

- Live data monitoring
- Control 4 valves with 0-100% positioning
- Monitor 4 valves
- Configure valves for power loss
- 4 Additional analog inputs
- 4 Optional digital inputs

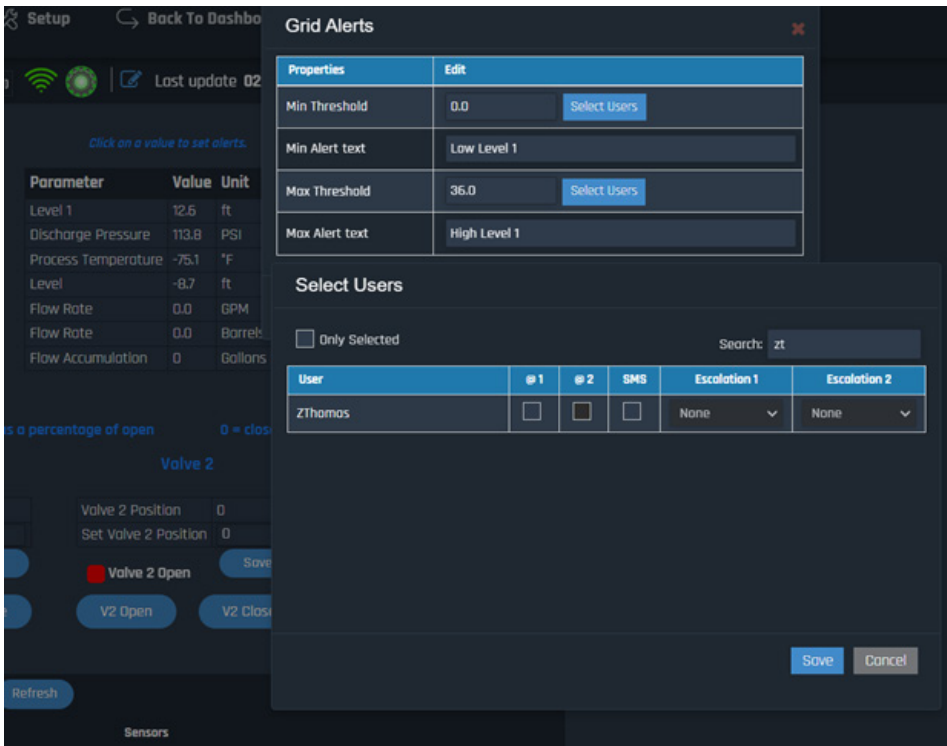
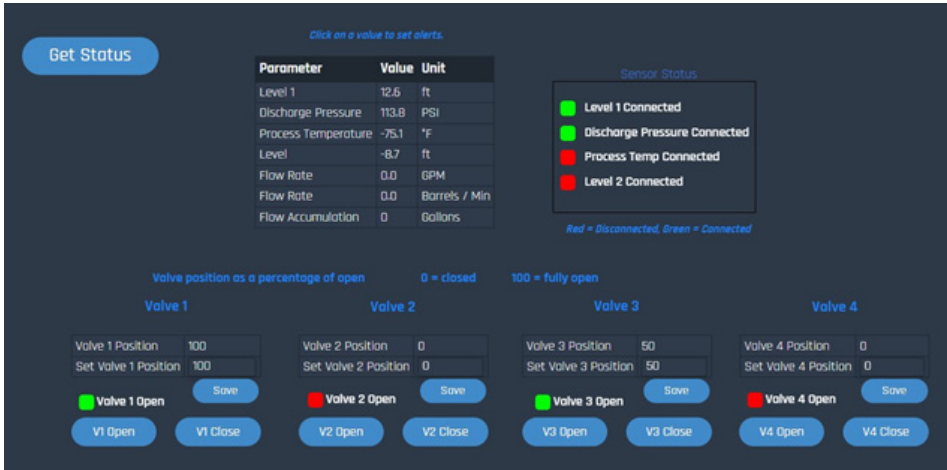
This panel empowers seamless remote control over four 4-20mA position valves. Each valve requires a dedicated power source that is compatible with 12-24VDC. By operating through 4-20mA signals, the valves can respond to commands and generate their own 4-20mA signals. This unique feature ensures that the Co-Pilot remains informed about the precise position of the valves, thereby achieving a comprehensive and efficient feedback loop.

#### CO-PILOT USER INTERFACE ALLOWS YOU TO:

- Access historical data for all sensors
- Enable live data when needed
- Receive real-time alerting
- Integrate a valve controller into your pumping fleet

*Valves sold separately.*

# CO-PILOT™ VALVE CONTROLLER SPECS.



Co-Pilot desktop version screenshot.

Get started at  
[CORNELLPUMP.COM/CO-PILOT](http://CORNELLPUMP.COM/CO-PILOT)

## TECHNICAL SPECIFICATIONS

### COMMUNICATION

- 4G LTE cellular cloud connectivity or Ethernet
- Available on Android and iOS apps
- GPS location information

### ON-BOARD MONITORING

- Modbus (RS-485)
- 4 analog outputs (4-20mA)
- 8 analog inputs (4-20mA)
- 4 optional digital inputs
- 1 relay output

### EDGE COMPUTING

- Live Data (polling times under 5 sec.)
- Cloud-based automation compatible

### ALERTING AND REPORTS

- Generate automatic reports
- Configurable alerts
- Voice, text, or email alerts
- Alert escalation

### DIMENSIONS/ OPERATIONS/ STANDARDS

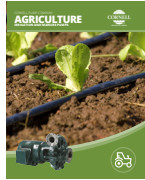
- 12.15" by 6.46" by 5.97"
- Temperatures from -22°F/ -30°C to 158°F/70°C
- UL standard upon request

### POWER

- External power: 12-24 VDC
- 500mA maximum

*Valves sold separately.*

# CORNELL PUMP COMPANY MARKET & PRODUCT LINE



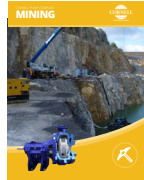
AGRICULTURE



FOOD PROCESS



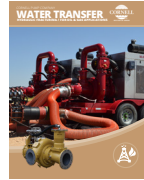
INDUSTRIAL



MINING



MUNICIPAL



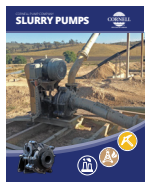
WATER  
TRANSFER



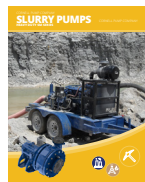
REFRIGERATION



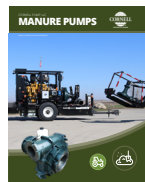
CONSTRUCTION



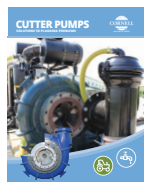
SLURRY



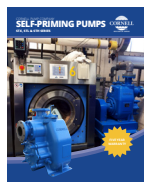
SLURRY SM



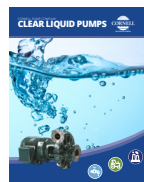
MANURE



CUTTERS



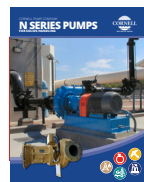
SELF PRIMING



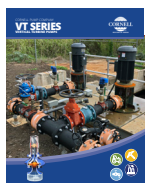
CLEAR LIQUIDS



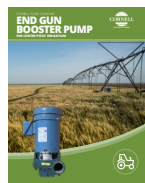
MX SERIES



N SERIES



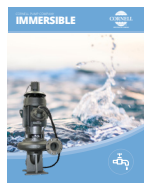
CYCLONE™



EDGE™



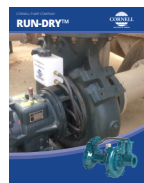
HYDRAULIC  
SUBS



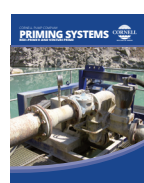
IMMERSIBLE



CD4MCU



RUN-DRY™



PRIMING  
SYSTEMS



CYCLOSEAL®

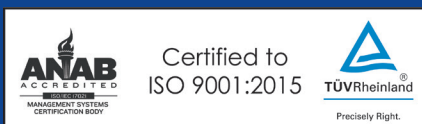
Cycloseal® and Redi-Prime® are Registered Trademarks of Cornell Pump Company.

Cornell pumps and products are the subject of one or more of the following U.S. and foreign patents:

6,074,554; 6,036,434; 6,079,958; 6,309,169; 6,104,949.

24 - IO - BR - 301

**CORNELLPUMP.COM**  
©2024 CORNELL PUMP COMPANY



Cornell Pump Company  
Clackamas, Oregon, USA  
P: +1 (503) 653-0330  
F: +1 (503) 653-0338

AUTHORIZED CORNELL PUMP DISTRIBUTOR